

ULSÜLÜ=AKSAK

NİHAVENTİ ŞARKI

Söz: NİGİN AYGÜL BİNÖL

♩ = 200

(-DARILMA HIÇ SİTEM EDİP-)

Yükük: Mele CEVHAİR

SAZ - - - - - SAZ - - - - - SAZ - - - - - SAZ

SAZ - - - - - SAZ - - - - - SAZ - - - - - SAZ - - - - - SAZ

DA RIL MA HIÇ Sİ TEM E DİP SE LÂM VER DİM HL MA DİN Kİ

İ Yİ Mİ SİN CA NİM DE YİP HA TI RI MI SOR MA DİN Kİ

İ Yİ Mİ SİN CA NİM DE YİP HA TI RI MI SOR MA DİN Kİ

HANI MUTLU O LA ÇAK TIK AN LI YO RUM BİTTİ AR TIK İ NÂH HA LÂ

KALBİM Kİ RİK HA TI RI MI SOR MA DİN Kİ SOR MA DİN Kİ

SAZ - - - - - SAZ - - - - - SAZ - - - - - SAZ - - - - - SAZ

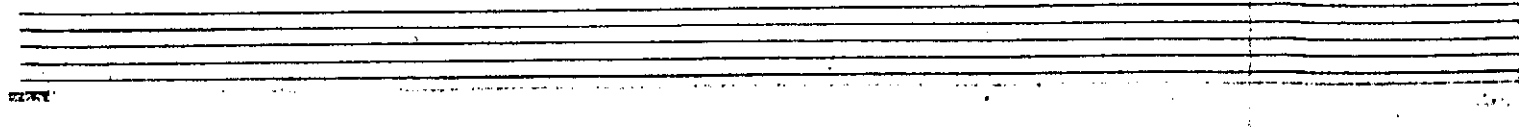
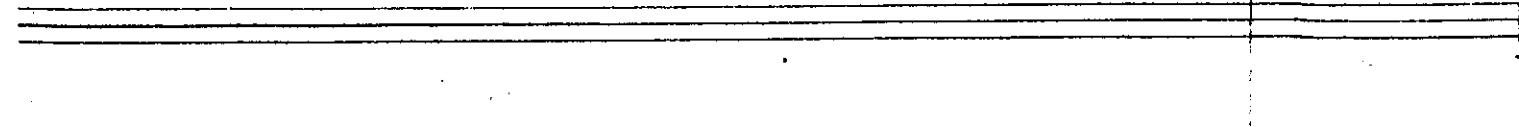
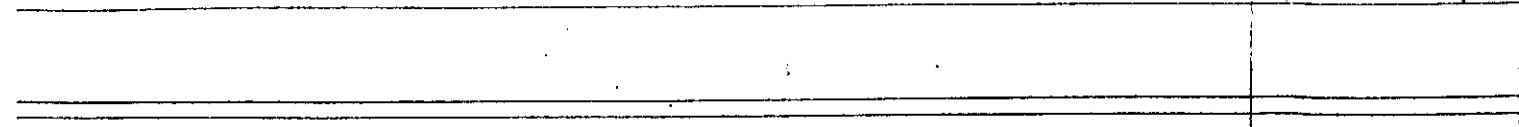
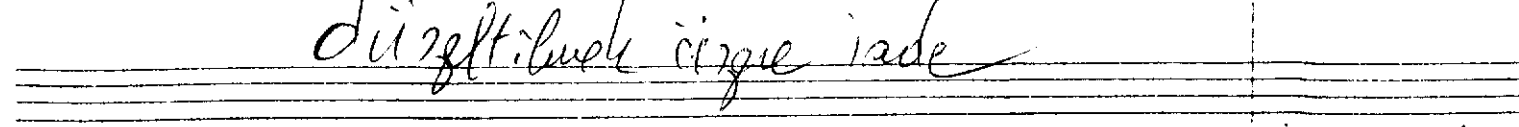
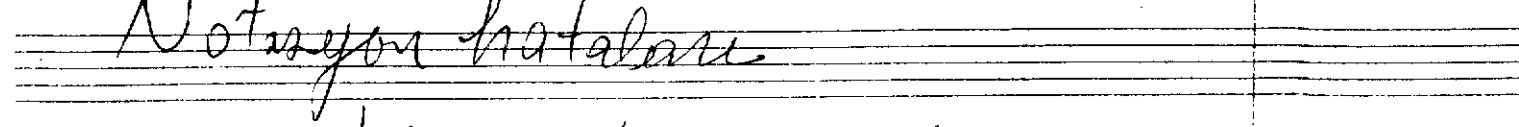
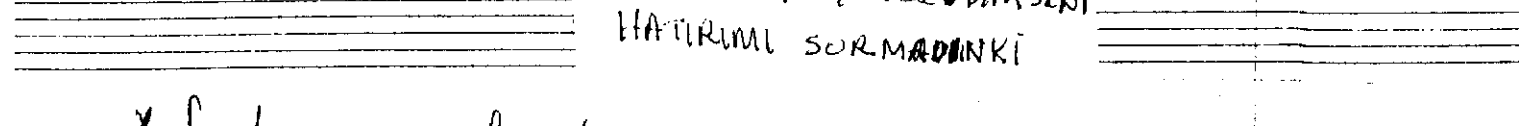
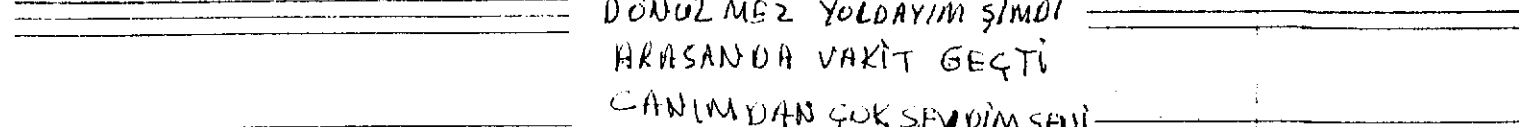
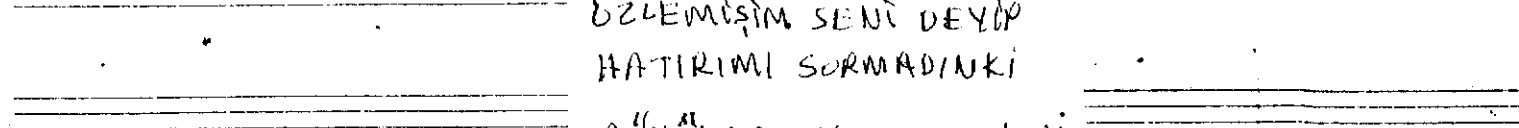
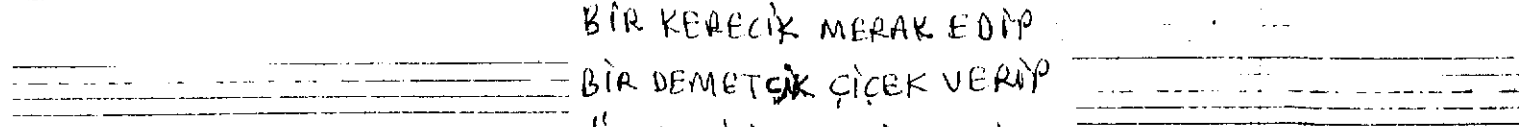
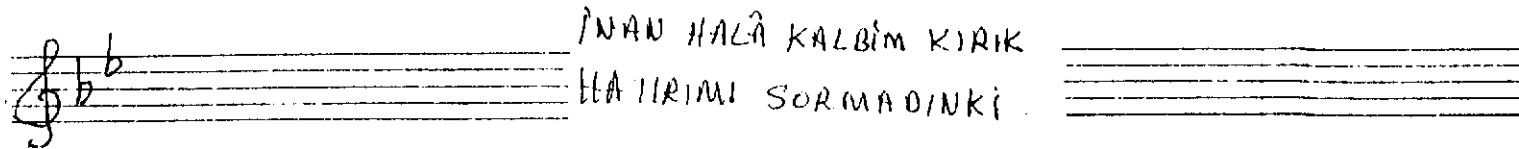
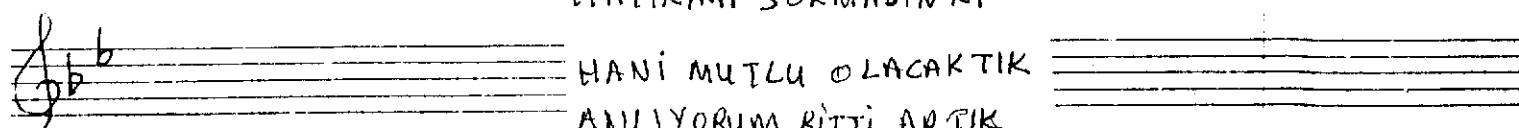
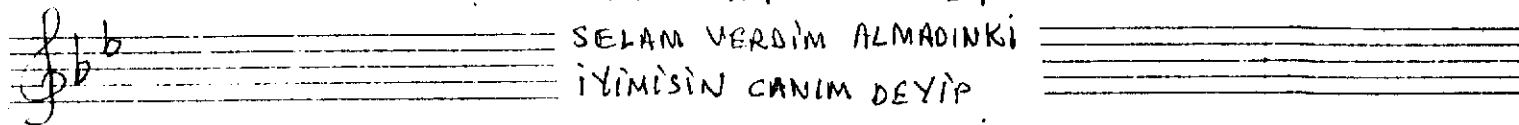
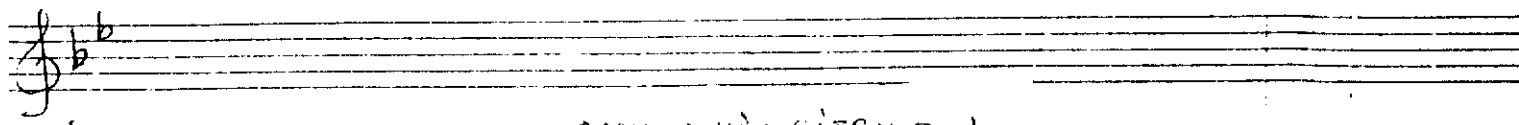
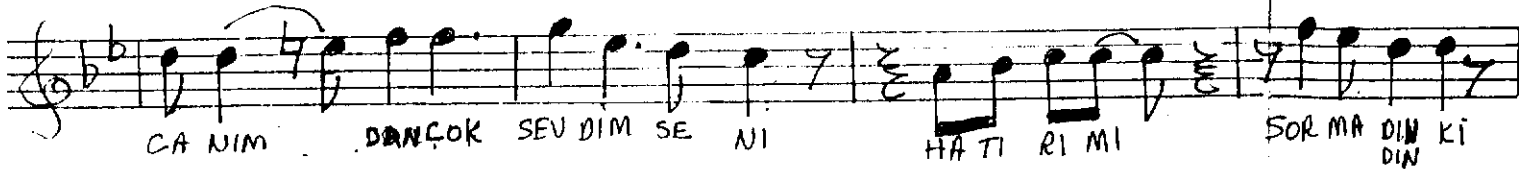
SAZ - - - - - SAZ - - - - - SAZ - - - - - SAZ - - - - - SAZ

BİR KE RE ÇİK ME RAK E DİP BİR DE MET ÇİK Çİ ÇEK VE RİP

ÖZ LE Mİ ŞİM SE Nİ DE YİP HA TI RI MI SOR MA DİN Kİ

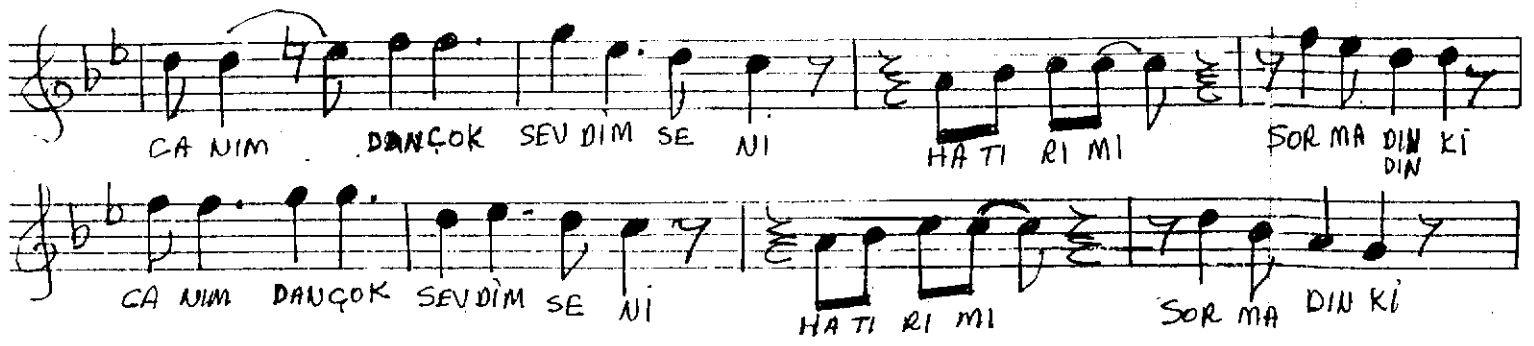
ÖZ LE Mİ ŞİM SE Nİ DE YİP HA TI RI MI SOR MA DİN Kİ

DÖ WÜL MEZ YOL DA YİM ŞİM Dİ A RA SAN DA VA KİT GEÇ Tİ



Notasyon hataları

düzeltilmek üzere iade



DARILMA HİÇ SİTEM EDİP
SELAM VERDİM ALMADINKİ
İYİMİSİN CANIM DEYİP
HATIRIMI SORMADINKİ

HANİ MUTLU OLACAKTIK
ANLIYORUM BİTTİ ARTIK
İNAN HALÂ KALBİM KIRIK
HATIRIMI SORMADINKİ

BİR KEREÇİK MERAK EDİP
BİR DEMETÇEK ÇİÇEK VERİP
ÖZLEMİŞİM SENİ DEYİP
HATIRIMI SORMADINKİ

DÖNÜZ MEZ YOLDAYIM ŞİMDİ
ARASANDA VAKİT GEÇTİ
CANIMDAN ÇOK SEVDİM SENİ
HATIRIMI SORMADINKİ